

2005



L I N C O L N

N A V I G A T O R



Navigator Ultimate in Camel with American walnut burl wood accents.





Navigator Ultimate in Silver Birch Metallic with available power-deployable running boards.



Navigator Ultimate's standard power liftgate.



# Feel the Power.

Lincoln Navigator is elegantly restyled for 2005 with sleek, new exterior lines reinforcing its powerful proportions. Under this taut skin, a new 300-hp 5.4L 3-valve V-8 engine is paired with a 6-speed transmission for improved off-the-line acceleration and fuel economy. With all this power comes exceptional poise, thanks to AdvanceTrac® with Roll Stability Control™ (RSC)\*, standard on every Navigator. By automatically applying the brakes and modulating engine torque, AdvanceTrac gives you more control in adverse conditions. Class-exclusive\*\* RSC utilizes a gyroscopic sensor to monitor the vehicle's condition and engages AdvanceTrac as soon as an unstable situation is detected. It's peace of mind you can't find anywhere else.

When you've got the power, use it. Navigator's got it. Class-exclusive features like Navigator Ultimate's standard power-folding 3rd-row seats put convenience at your fingertips, and available power running boards glide out to provide a step when the door is opened, and retract when the door is closed. Loading is easy, even with your hands full, with Ultimate's standard liftgate that raises or lowers on its own. In addition, power-adjustable brake and accelerator pedals with memory for 2 drivers make you comfortable behind the wheel of every Navigator. Even the large, heated sideview mirrors provide a power-fold function, and they include built-in turn indicators to clearly signal your driving intentions.

Navigator Ultimate is the first in its class to offer a cinema-quality sound system created exclusively for an SUV. Just like THX® technology at the movies, the available Lincoln Soundmark™ THX-Certified Audio System is fine-tuned with 9 speakers, 300 watts of power, a 6-disc in-dash CD changer and 3 listening modes. This sonic treasure is packaged with a Navigation System that understands 171 voice commands. For a seemingly endless stream of audio bliss on every journey, add the SIRIUS Satellite Radio<sup>†</sup> service, which features over 120 channels of coast-to-coast music, news and entertainment.

\*Remember that even advanced technology cannot overcome the laws of physics. It's always possible to lose control of a vehicle due to inappropriate driver input for the conditions. \*\*Full-size Luxury SUV. †See your Lincoln Mercury Dealer for installation and activation details.



1 Dealer-installed option; requires Navigation System. 2 Always wear your safety belt and secure children in the rear seat. 3 Excludes steel spare. 4 Homelink is a registered trademark of Johnson Controls.

## KEY NAVIGATOR STANDARD EQUIPMENT

### LUXURY

#### Performance

Brakes - power 4-wheel disc with Anti-lock Brake System (ABS) and Electronic Brake Force Distribution (EBD)

Cooling System - fail-safe

Engine - 5.4L SOHC 3-valve V-8

Suspension - 4-corner load-leveling air suspension, independent front and rear

Transmission - 6-speed automatic with overdrive

#### Interior

Audio - Lincoln Soundmark™ Audiophile Sound System with AM/FM stereo/6-disc in-dash CD changer; driver-adjustable, speed-compensated volume; 9 speakers including a subwoofer and rear-seat controller; SIRIUS Satellite Radio capable<sup>1</sup>

Climate Control - Dual-zone Electronic Automatic

Temperature Control with secondary steering-wheel-mounted controls and heated/cooled seats controls (if equipped)

Rearview Mirror - auto-dimming

Seats - 1st row: leather-trimmed, low-back bucket seats, power 8-way seats including power lumbar and recline, 4-way adjustable head restraints and driver's-side memory; 2nd row: leather-trimmed low-back fold-down bucket seats with recline, 2-way head restraints and easy entry to 3rd row; 3rd row: 60/40 split fold-flat-into-floor bench seat with 2-way adjustable head restraints (outboard only) and center-seat integrated restraint

#### Exterior

Fog Lamps

Running Boards - fixed

Standard-Duty Trailer Tow Package - Class III frame-mounted trailer hitch receiver integrated into rear fascia, 4-pin wiring harness

Wheels - 18" 7-spoke machined-aluminum with steel spare

EPA-estimated fuel economy: 5.4L, 4x2, 13 city/18 highway.

Comparisons based on 2004 competitive models, publicly available information and Ford certification data at time of printing. Following the publication of this brochure, certain changes in standard equipment, options, prices and the like, or product delays may have occurred which would not be included in these pages. Your Lincoln Mercury Dealer is your best source for up-to-date information. Lincoln Mercury reserves the right to change product specifications at any time without incurring obligations. Options shown or described in this brochure are available at extra cost and may be offered only in combination with other options or subject to additional ordering requirements or limitations.

#### Safety/Security

AdvanceTrac® with Roll Stability Control™ (RSC)

Airbags<sup>2</sup> - dual-stage driver and front-passenger; side-curtain airbags as part of Safety Canopy™ System

Keyless Entry Keypad - driver's-door-mounted

Personal Safety System™ - including dual-stage front airbags with front crash severity sensor, sensors to detect front safety belt usage and driver's-seat position, front safety belt pretensioners and energy-management retractors

Remote Keyless Entry System

Safety Canopy System - 1st- and 2nd-row side-curtain airbags with rollover sensors

SecuriLock® Passive Anti-Theft System

Side-Impact Door Beams

Tire Pressure Monitoring System<sup>3</sup>

#### Instrumentation/Driver Control

Homelink® Universal Transceiver<sup>4</sup> - located in driver's-side visor

Power-Adjustable Pedals - with memory

Steering Wheel - tilt, leather- and wood-trimmed with audio, climate, speed and Navigation System controls (if equipped)

### ULTIMATE

In addition to or in place of equipment on Luxury:

Heated and Cooled Seats - driver and front-passenger with 3 settings

Moonroof - power, includes mini-overhead console

Power-Folding 3rd-Row Seats - 60/40 split bench

Power Liftgate

## AVAILABLE EQUIPMENT

### LUXURY

#### ULTIMATE

- Appearance Option Package - monotone-painted front/rear lower fascias, license-plate surround and grille (chromed slats with body-color surround), Rear-Seat DVD Entertainment System, and heated and cooled front seats (available with Black or Cashmere Tri-Coat exterior)
- Audio - AM/FM stereo/single-CD/cassette player
- Audio/Navigation - Lincoln Soundmark THX®-Certified Audio System including voice-activated, touch-screen DVD/Satellite Navigation System and 6-disc in-dash CD changer, SIRIUS Satellite Radio capable
- ● Control Trac® - 4x4 system
- ● Headlamps - High-Intensity Discharge (HID)
- S Heated and Cooled Seats - driver and front-passenger
- Monotone Appearance Package - monotone-painted front and rear lower fascias, grille surround with chromed slats, license-plate surround, running boards, bodyside cladding and chrome exhaust tip and 18" 7-spoke chrome-aluminum wheels (available with Black or Cashmere Tri-Coat exterior)
- S Moonroof - power, includes mini-overhead console
- ● Rear-Seat DVD Entertainment System - includes 2nd-row overhead DVD/CD player with MP3 capability, infrared remote, flip-down 7" color LCD screen and 2 sets of wireless headphones
- Running Boards - power-deployable (not available with 40/20/40 split 2nd-row seat on 4x4)
- ● Seats - 2nd-row premium leather-trimmed 40/20/40 split-fold bench with fold-flat feature, outboard recline, and center section that slides forward up to 11" (not available on 4-wheel-drive models equipped with power running boards)
- ● Heavy-Duty Trailer Tow Package - includes frame-mounted Class III/IV hitch receiver, 4- and 7-pin wiring harness, heavy-duty radiator, heavy-duty flashers, transmission cooler and brake module wiring
- Wheels - 18" 7-spoke chrome-aluminum with P255/70R18 all-season BSW tires

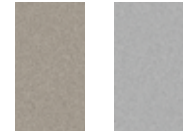
S=Standard ●=Optional

## COLORS



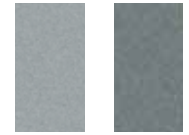
Black

Vivid Red Metallic



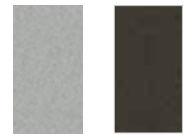
Light French Silk Metallic

Silver Birch Metallic



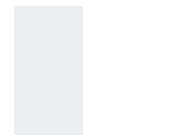
Satellite Silver Metallic

Light Tundra Metallic



Cashmere Tri-Coat\*

Charcoal Beige Metallic



Oxford White

\*Additional cost.